



OWL-Plantation System

The best & proven ERP for Agribusiness

PT. ORIGIN WIRACIPTA LESTARI

Golden Plaza D' Best Fatmawati, Lottemart Blok E No.12a,
Jl. Rumah Sakit Fatmawati, Jakarta Selatan, Indonesia 12420

Telp : +62 (021) 7509951

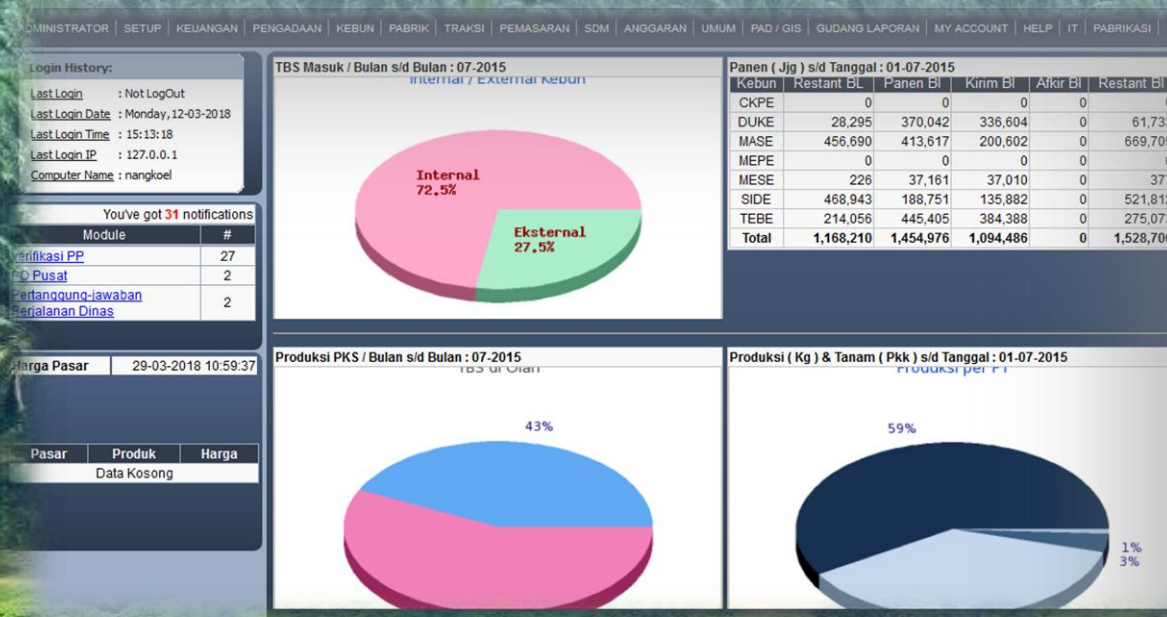
Sales : +62 818 9999 49

nangkoel@owl-plantation.com



What is OWL-Plantation System?

- OWL-Plantation System is Enterprise Resource Planning (ERP) that specializes in providing computerized system solutions for Agribusiness and built under open source platform.





History

- Development starting in 2006 in Indonesia
- Built by young Indonesians who are experts in the Agriculture
- The first implementation in 2010
- Has been registered on behalf of Origin Wiracipta Lestari,PT since 2011
- Continuous development to date (2023) has entered version 12.0





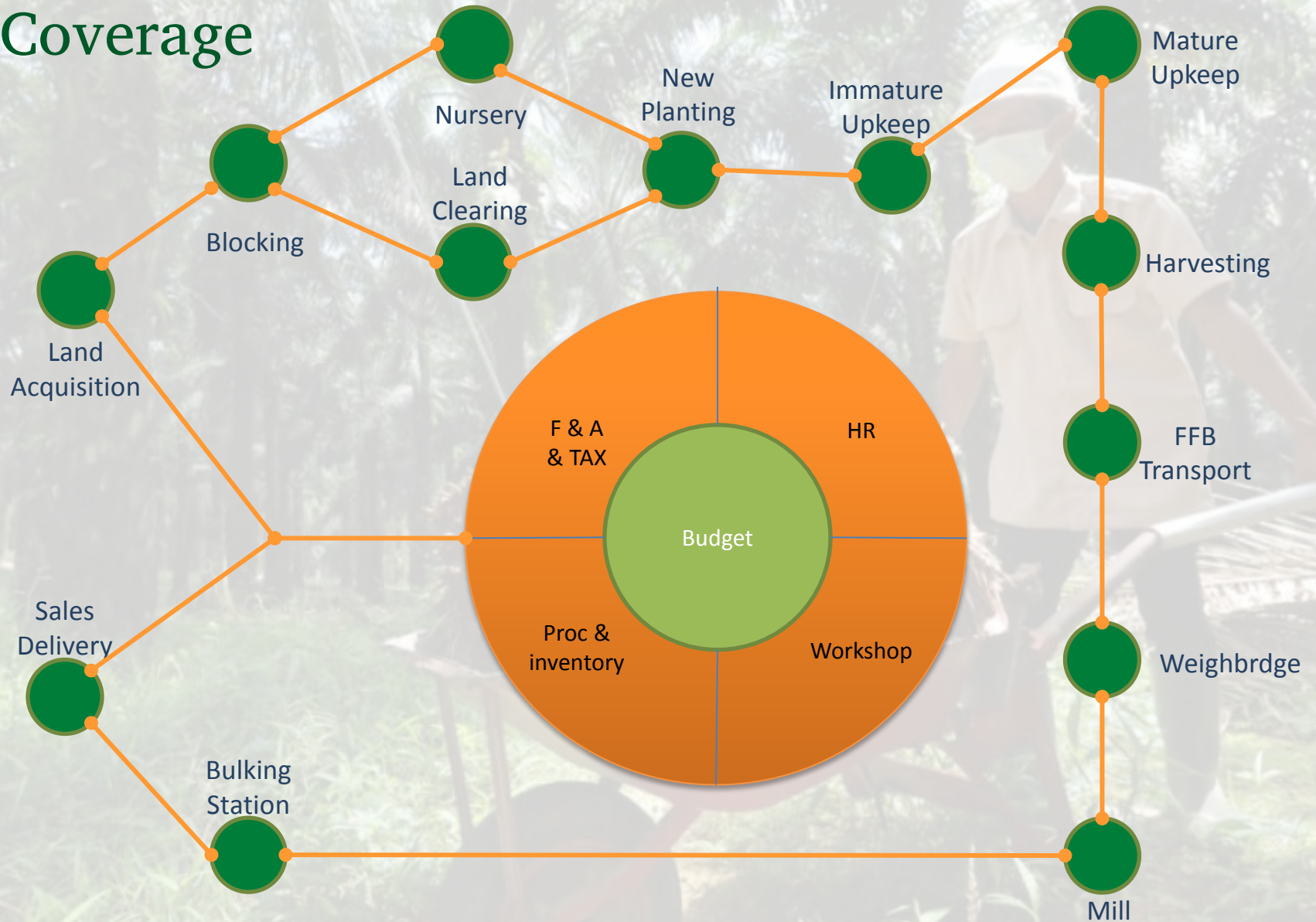
Why we created OWL-Plantation?

- Unavailability of specific solutions for the agribusiness system. Generally available only business solutions that have existed since the industrial revolution that is generally rigid, costly, difficult to implement and difficult to accept a new culture.

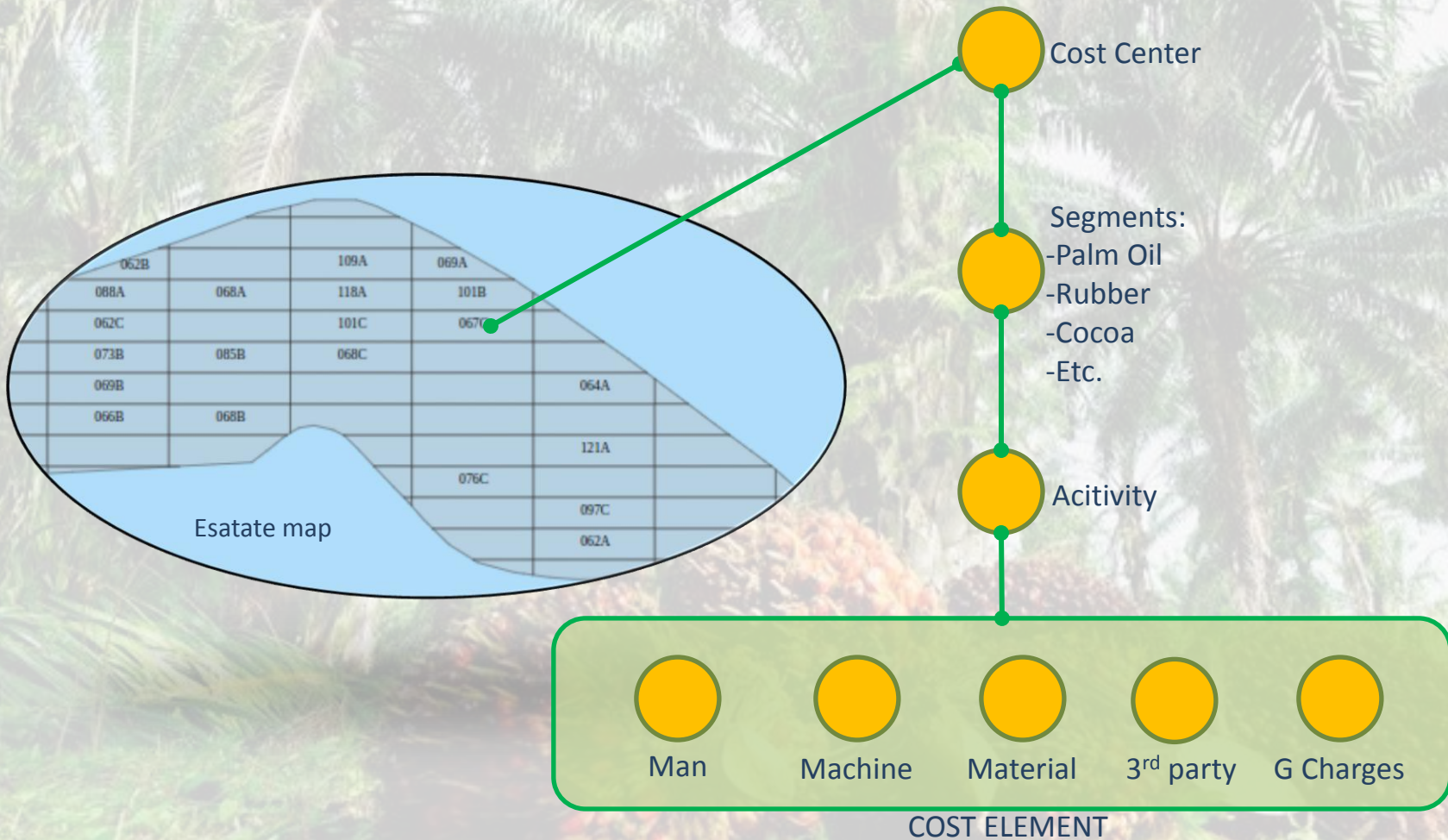


- OWL-Plantation System present to eliminate these obstacles in the hope that agribusiness can be more productive, efficient, easy to control and environmentally friendly

Coverage



Basic Concept





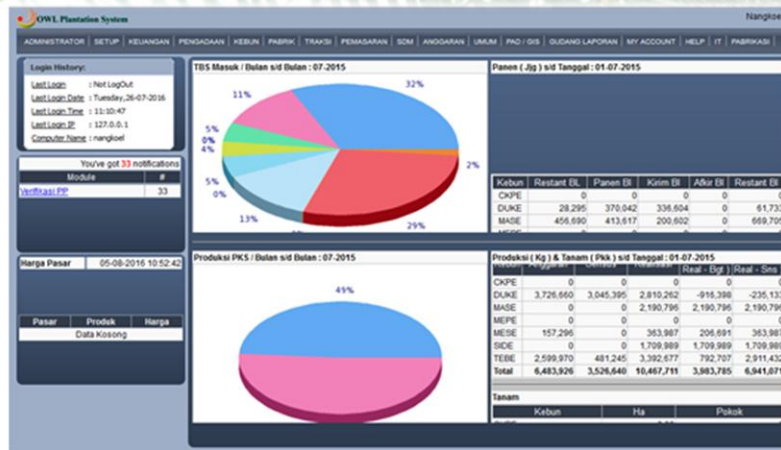
What are the advantages?

1. Total solution from A to Z, so no additional apps required
2. Single entry of all data source lines, thus reducing duplication of work
3. Digitalization of field administration (Android) to reduce administrative personnel
4. There are no restrictions on the number of users
5. Multi company and unlimited number of companies
6. Specific security & authorization base on company organization structure
7. Easy integration with 3rd hardware or software
8. Lightweight data transfer
9. Easy to develop with millions of developers available on the market
10. Available in both Cloud and On-premise form
11. Specific features for Agribusiness
12. Available after sales service and also customers can choose develop independently
13. Developer training is free of charge
14. Low investment on peripheral & data infrastructure

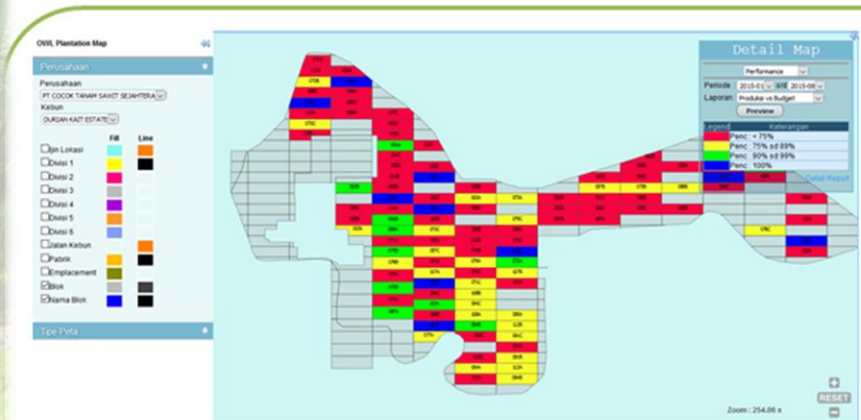




Software Products:



OWL-Plantation System (ERP)



OWL-Plantation Business Intelligent

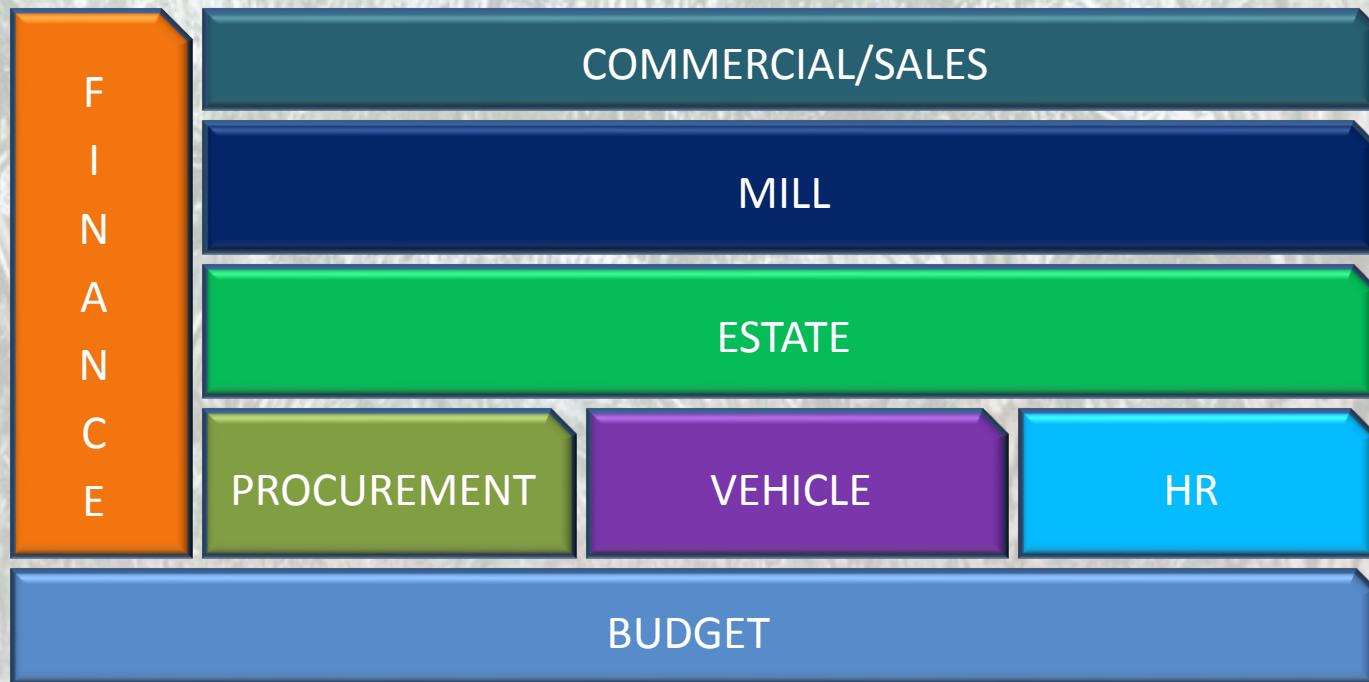


OWL-Plantation Mobile



1. OWL-Plantation ERP

Main Modules





1. OWL-Plantation ERP Main Features

Sub-modules

Budget

- Estate Management
- Vehicle & Heavy Equipment
- Mill Management
- Budget
- Department Support
- Additional Budget Approval
- All related Reports

Vehicle

- Vehicle/ Heavy Equipment
- Service & Maintenance
- Activity
- Preventive Maintenance
- Project System
- Civil Activity
- All related Reports

Mill

- Weighing
- Process
- Maintenance
- Production
- Mill Loss
- Grading
- All related Reports

Human Resource & General

- Employee Data and Family
- Payroll Unit
- Loan & Installment
- PPH21
- Reminder
- Promotion/Demotion/Mutation
- Business Trip
- Leave Proposed
- Housing & Infrastructure Condition
- Presence with Fingerprint
- BPJS/Jamsostek
- Electronic Filing System

Estate

- Areal Statement
- Nursery
- Land Clearing
- Immature & Mature (Upkeep)
- Harvesting
- FFB Transport
- Quality Control/QC
- Census of Production
- Daily and Monthly Program
- All related Reports

Procurement

- Purchasing
- Warehouse /Inventory
- Contract
- Contract Settlement
- All related Reports

Finance/Acc.

- Cash /Bank (AR-AP)
- Journal
- Asset management
- Loan Management
- Financial Statement & Report
- After Audit Journal

Managerial Report

- Monthly Management Report
- Managerial Report
- Financial Report
- Asset

Commercial

- Sales Contract
- Contract Fulfillment and Delivery
- Tax Invoice
- Daily Market Price
- External FFB

PAD

- Land Acquisition History/ List



2. OWL-Plantation Mobile Apps

Mobile Features:

- Area Statement Master
- Employee Master
- Daily upkeep activity
- Daily harvesting record
- Harvesting transports (SPB) with qRCode Format
- Geographical positioning recording
- Approval by Assistant or Admin Head
- Daily reporting viewer

Server Side Features:

- All related master data
- All Related Formula (Policy)
- All Related Report (Cumulative)

SPB NO:201605041325

Header:

No	Tanggal	Afdeling	Tujuan	Status
1	2016-06-04	DUKE01	SKDM	

Detail SPB:

No	TPH	JJG	Brondolan	Mentah	Busuk	LewatMat
1	8991906101019	230	25	4	0	12

Print QRCode

Close

Location:-6.5072858,106.8036578

Canlah Business Intelligent Dalam Bentuk QR



3. OWL-Plantation Reporting Analysis

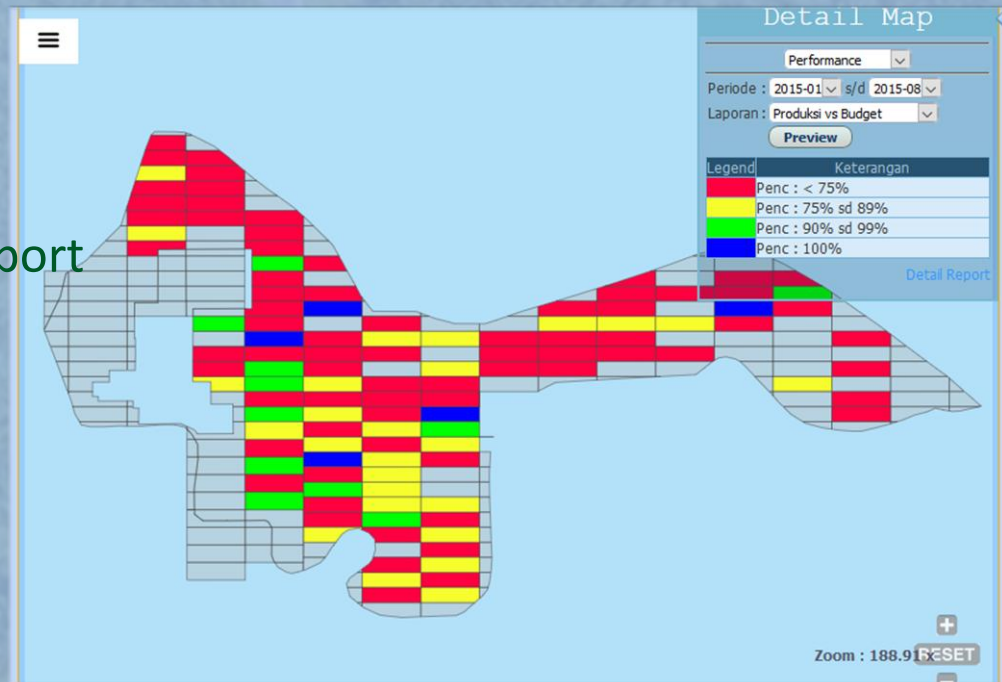
Features:

- Map Reporting

- Planting point
- Tracking
- Cost
- Activity Cycle
- Performance

- Drillable graphical report

- Cost
- Activity Cycle
- Performance
- Comparison





4. Sensors Products:



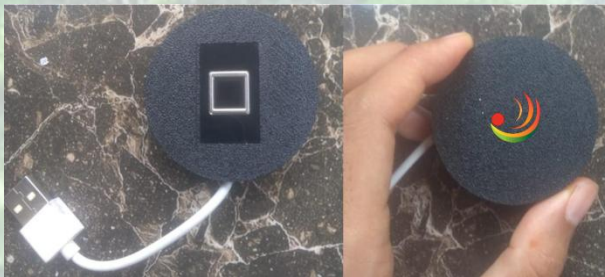
Digital Ombrometer:

- Minim Maintenance
- AutoFlush
- Bluetooth/Wifi/UTP
- Auto-Upload while direct connection



Storage Sounding Sensors:

- Lasser Sensors
- Bluetooth/Wifi/UTP
- Auto-Upload while direct connection
- Very useful for production calculation accuracy



Mobile Fingerscan:

- Very useful for guaranteeing workers on site and can divide costs accurately against workers doing more than one job in a day
- Geotagging
- Bluetooth/Wifi



Benefits obtained through the implementation of OWL-Plantation



COST SAVING SOURCES

Reducing administrative workforce

Free user License
(Unlimited Users)

Free License for multiple
Business Unit

Reducing
paper
usage

EASE OF BUSINESS CONTROL



REAL-TIME DATA

Gives you time to make good decisions

HIGH ACCURACY DATA

Single entry, no redundant input

ALL BUSINESS LINE IN ONE APPLICATION

You can see which lines need guidance



How the system can save costs

- **Countable:**

Assume per Estate Unit or equivalent to 5000Ha of planted area.
Then the savings that can be calculated are as follows:

1. *Paper: total savings of IDR. 700,000/month*

2. *Labor: total savings of IDR. 40,000,000/month (10 people)*

=====Total/Year IDR **488.400.000**

- **Uncountable:**

- Minimum Loss due to to maximum control
- High accuracy for right decision
- Rapid information for rapid decision making



Try OWL-Plantation Demo

To confirm conformity with your needs, the OWL-Plantation system provide a demo link, you can follow the link below

<http://demo.owl-plantation.com>



Services

1. OWL-Plantation Implementation

% of Modification	Months								
	0-15%	1	2	3	4	5			
16-30%	1	2	3	4	5	6	7	8	9

Implementation time depends on the size and the necessary modifications, and will be determined based on the results of scoping. For palm oil companies, customization is usually up to 10%. For companies that are multi-commodity, customization can generally reach 30%

2. After Sales Support (Support Service)

- Onsite training
- Emergency support on technical failure
- Regular technical support
- Report Customization
- Minor change request



Technical Information

Framework:

OWL-Framework:

OWL-Framework is the first product of OWL-Plantation System which is the base for development modules, authorization planner, security environment and application management of OWL-Plantation System.

Language:

[PHP](#), [HTML5](#), [CSS3](#), [Javascript](#), [SQL](#), [SVG](#)

Apps.Server Environment:

Operating System: [Linux](#) ([Debian](#) Linux recommended)

Database: [MariaDB](#)

Server Feature: [Apache Web Server](#), [JpGraph](#), [FPDF](#), [PHP-Pear](#), [Minicon](#), [Cronjob](#)

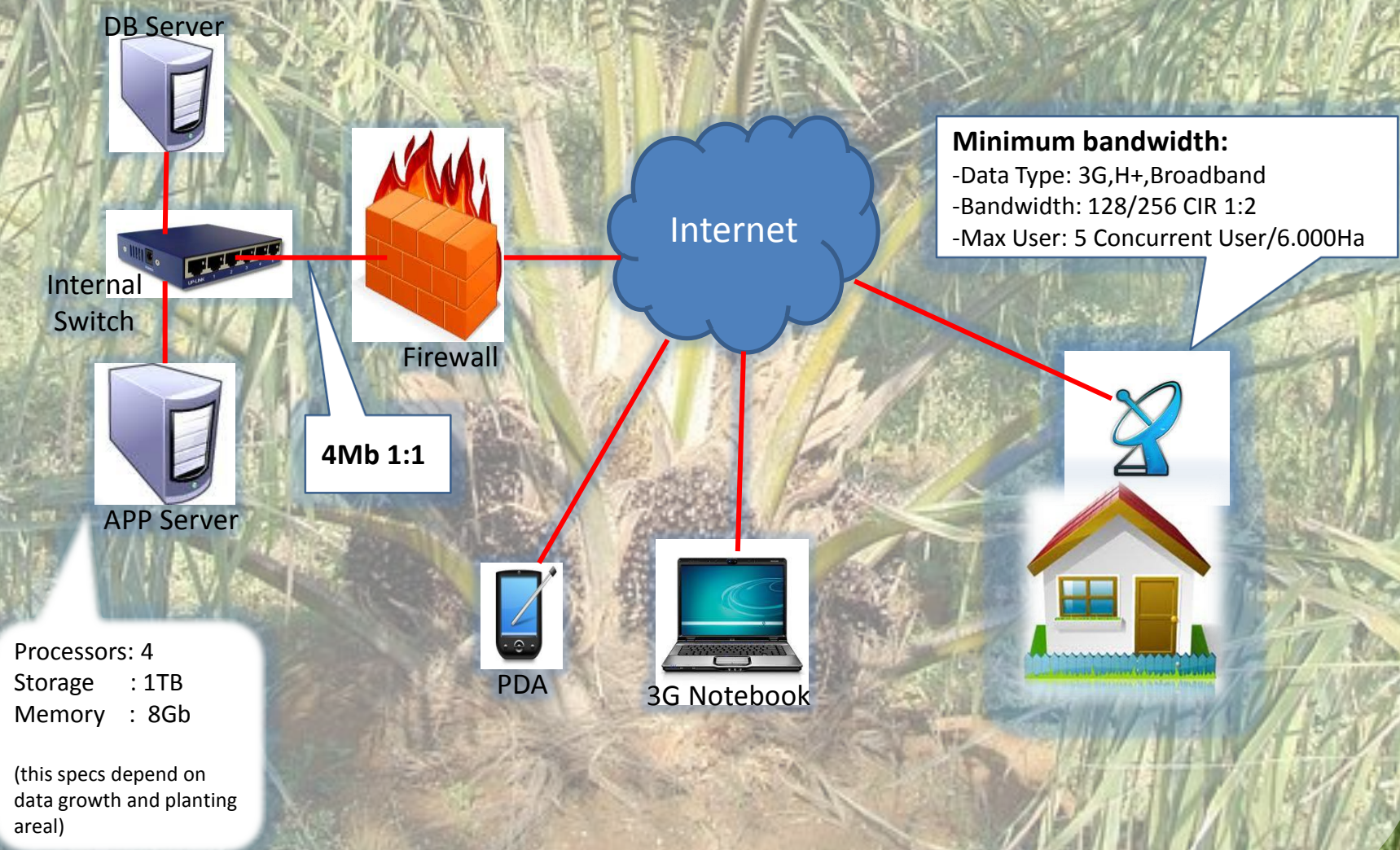
Development Tools:

Any text editor ([Notepad++](#), [Sublime Text](#), [Netbeans IDE](#), [Aptana IDE](#), [Eclipse IDE](#), [Komodo IDE](#) etc.)

[Cordova](#) and [Phoneygap](#) (for OWL-Mobile), [Adminer](#), [Subversion](#)



Technical Requirements





Who Is Origin Wiracipta Lestari, PT ?



Origin Wiracipta Lestari, PT

Origin Wiracipta Lestari, PT was established in Jakarta (Indonesia) on 28 Feb, 2011. The shareholders are domestic company, Ninox Sakti Indonesia, PT and Minanga Ogan Group (Palm Oil Company).

Origin Wiracipta Lestari, PT

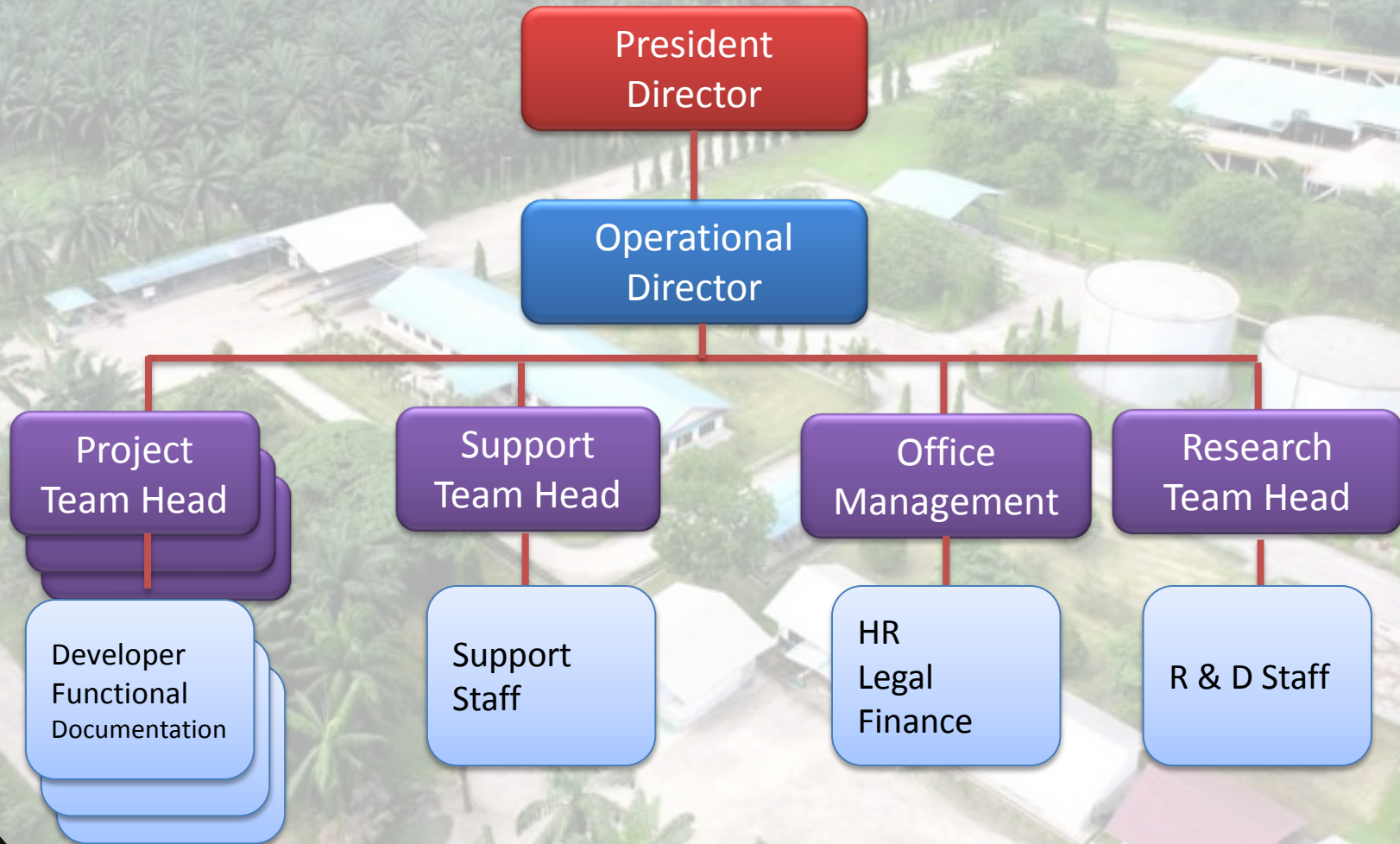
Is an OWL-Plantation system implementer and also provides OWL-Plantation system maintenance services

OWL-Plantation System has been registered at the Ministry of Law and Human Rights Republic of Indonesia in 2013 with the number 066493 dated July 4, 2013.

- Director
 - President Director: Yazid Kanca Surya (Treasurer DMSI)
 - Director : Repindra Ginting
- Commissioner
 - Nursani Mona Surya (President Director PT. Perkebunan Minanga Ogan, General Treasurer GAPKI 2018-2023)



Organization Structure



Clients



No.	Company Name	Area (Ha)	City	Site
1	Minanga Group	35,000	Jakarta	Sumsel, Lampung, Kaltim
2	Mahanusa Hijau Selaras Group	8,500	Jakarta	Kal-Bar
3	Fajar Baizury Group	12,000	Jakarta	Nagan Raya, Aceh
4	PT. Nafasindo	9,000	Medan	Singkil, Aceh
5	PT. Bursa Berjangka Jakarta (JFX)	-	Jakarta	Jakarta
6	Hardaya Plantation Group	42,000	Jakarta	Sul-Teng, Kaltara
7	KPP Group Samarinda	15,000	Samarinda	Kaltim
8	Medco-Agro	32,000	Jakarta	Kalteng, Papua
9	PT. Fortius Wajo Perkebunan	45,000	Jakarta	Jambi
10	Bima Palma Nugraha	18,000	Jakarta	Kal-Tim
11	The Capitol Group	12,000	Jakarta	Papua
12	Dharma Agung Wijaya Group	8,000	Jakarta	Jambi, Kalbar, Kaltim
13	Cempaka Mas Abadi	9,000	Jakarta	Sumsel, Kalteng
14	Menthobi Makmur Lestari	6,000	Jakarta	Kalteng
15	Shin Tek Huat Group	15,000	Jakarta	Jambi, Kalimantan
16	Syaukath Sejahtra	Mill Only	Banda Aceh	Aceh
17	Mong Reththy Investment Cambodia	20,009	Cambodia	Phnom Penh
18	Citra Putra Asri Group	5,000	Banjarmasin	Kal-sel
19	Jawapos Agro Group	6,000	Surabaya	Jambi
20	Bumitama Gunajaya Agro	180,000	Jakarta	Kalimantan
21	Parna Raya Group	6,000	Jakarta	Kal-Bar
22	Ithaca Group (ex. Lyman)	35,500	Jakarta	Kal-Bar
23	Goldenland Gemilang	3,800	Jakarta	Kal-Teng
24	Batu Gunung Mulia Putra Agro	Mill Only	Jakarta	Kal-Sel
25	Bakrie Sumatra Plantation	90,000	Jakarta	Sumatra
26	Menara Sentrarejeki	Mill Only	Jakarta	Jambi
27	Ichico Agro	6,500	Jakarta	Kal-Bar
28	Anugrah Langkat Makmur	7,300	Medan	Madina, Langkat



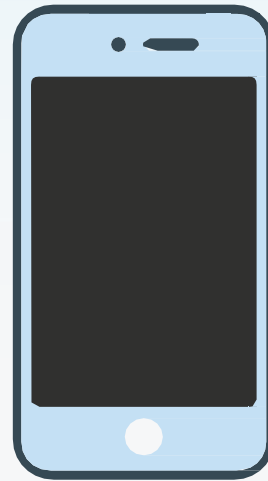
Contact

Repindra Ginting

Golden Plaza D' Best Fatmawati, Lottemart Blok E No.12A,Jl.
Rumah Sakit Fatmawati, Jakarta Selatan, Indonesia 12420

Office : +62 (021) 7509951
Sales : +62 818 9999 49, +62 811 166 449
Email : nangkoel@owl-plantation.com
Website : <http://owl-plantation.com>
Support : <http://support.owl-plantation.com>

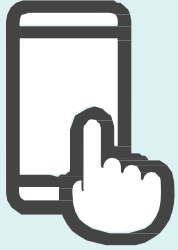
OWL Plantation Mobile App



Mobile Aplikasi System OWL - Plantation System

The Best and proven ERP for Palm Oil Plantation Business

Min Device Specifications



OS :Android 7 (+)



CPU :1.8 GHz Cortex-A75
1.8 GHz Cortex-A55



DISPLAY :400 nits



BATTERY :Li-Po 5000 mAh



CAMERA :Single 8 MP



MEMORY :32GB - 3GB RAM (+)



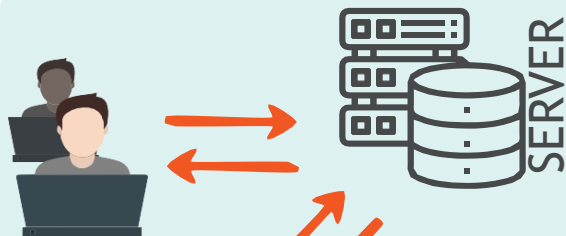
Cover :Hardcase, Tempered glass
Waterproof Case



COVER :Hardcase



Method



Onlin



Login / Data master



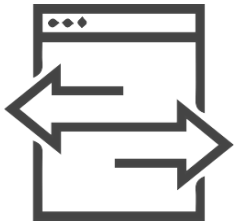
Synchronize



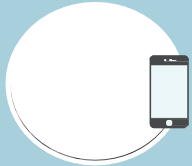
Offlin

Transactions

Flow Proses Harvesting Clerk



Morning Briefing



Login / Sync Master

Master data sync required to download all required data to use it offline in the field
-Employee master data, Block, Collection point etc.



Input

Scan Collection point ID and input number of bunch



Foto

Take Foto of collection point



Print QR P

Pur qR Code on the top of bunch and will be used by transport clerk



Sync Transactions

Data sync to the server at the afternoon.

FINISH

FINISH

Finishing transaction of all collection point

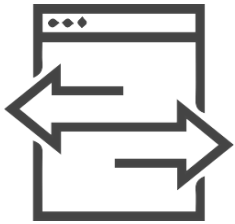
The data stored on local phone.



Onlin

Offlin

Flow Proses Verification by Foremann



Morning
Briefing



Login / Sync Master

Master data sync required to
download all required data to use
it offline in the field
-Employee master data, Block,
Collection point etc



Scan QR of the
harvesting clerk

Check if its correct or not



Foto

If not correct, edit the
data, save and print
another qR



Print & Replace QR old qR



Sync Transactions

Data sync to the server at the afternoon.

FINISH
FINISH

Finish verification

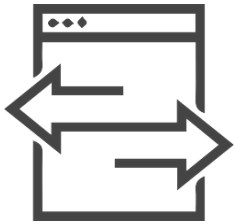
The data stored on local phone.



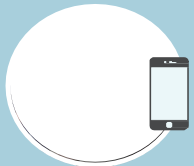
Onlin

Offlin

Flow Proses Transport Clerk



Morning Briefing



Login / Sync Master

Master data sync required to download all required data to use it offline in the field
-Employee master data, Block, Collection point etc



Key in Truck ID



Scan QR on each collection points



Print QR

This qR will used as transport document from the field to mill



Sync Transactions

Data sync to the server at the afternoon.

FINISH

Complete all collection point

Data stored on local phone.



Onlin

Offlin

Transport for double handling



1



SPTBS


Transport (1)
Bring the qR from stage 1 collection point

To larger collection point

START



Input new truck ID



Scan QR from stage (1)



NEW SPB

Print out new qR as the second Transport document (stage 2)

2



SPB

Transport (2)
Bring the qR from stage 1 collection point

To larger collection point

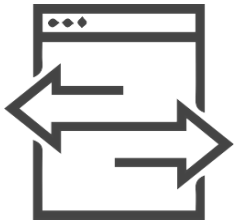
Onlin



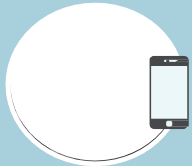
FINISH

Scan qR in the weighbridge. All the data will be automatically sync to the server

Flow Proses Upkeep Foremann



Morning Briefing



Login / Sync Master

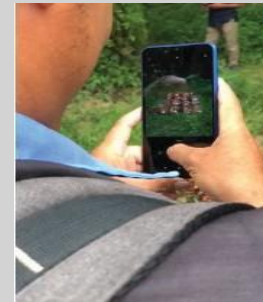
Master data sync required to download all required data to use it offline in the field
-Employee master data, Block, Collection point etc.



Fingerprint
Of all upkeep worker



Input
Key in data based on activity and output



Take foto

Finish

Data stored on local phone



Sync Transactions

Data sync to the server at the afternoon.

FINISH

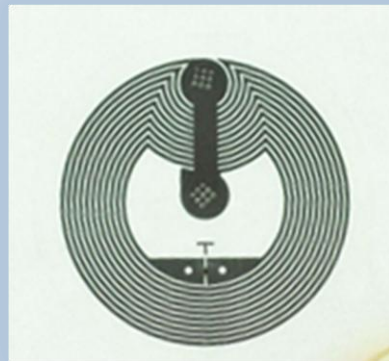


Onlin

Offlin

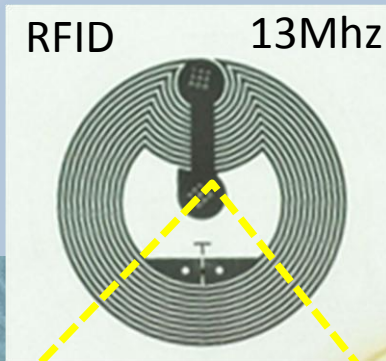
All the data recorded with GeoTag. So it can displayed through map.

PLANTING POINT IDENTITY





PLANTING POINT IDENTITY



ID: [BLOCKCODE][ROW][COLUMN]
LOC: [LATITUDE, LONGITUDE]
INF: [SEEDTYPE][PLANTINGYEAR]



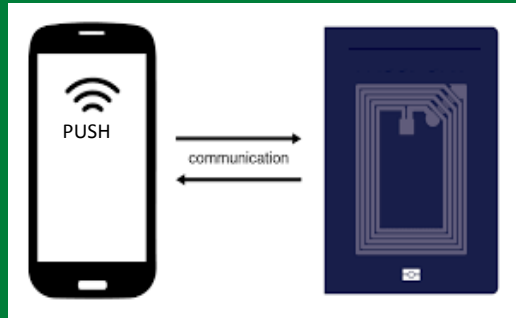
Objective:

- Higher accuracy in Tree Census (TC)
- Higher accuracy in Black Bunch Censsus (BBC)
- Higher harvesting yield estimation
- Detailed harvesting control
- Detailed fertilizer application control
- Precise measurement of tree based activity performance



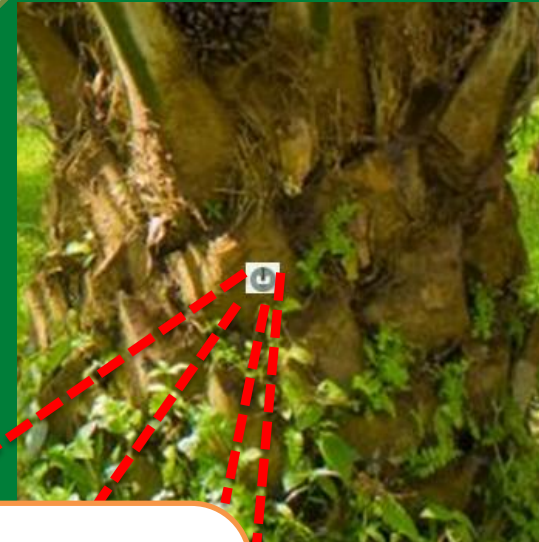


1. RFID Sticker Installation



ID: [BLOCKCODE][ROW][COLUMN]
LOC: [LATITUDE, LONGITUDE]
INF: [SEEDTYPE][PLANTINGYEAR]

**Record tree
identity to RFID**



Sticking to the trees

2. Activity

- Black Bunch Census
- Tree Census
- Harvesting Yield Estimation



Smartphone With RFID



Scan each sample



Synchronize



- Fertilizer Wf



OWL RFID Reader

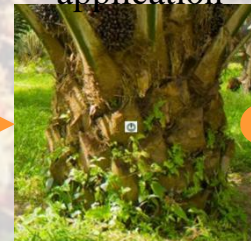


Tap each tree after application

- Harvester



OWL RFID Reader



Download data from RFID Reader

Foremann Phone



3. Reporting



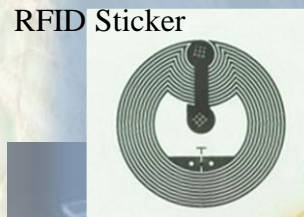
- Actual planting point (Grow)
- Harvesting cycle/tree
- Fertilizer volume/tree
- Fertilizing cycle/tree
- Visualize BBC Census tree by Map
- Visualize Samples of yield estimation



Equipments



Smartphone With
RFID



RFID Sticker



Acrylic



Plastic Screw

RFID Reader



Power Cord Dock